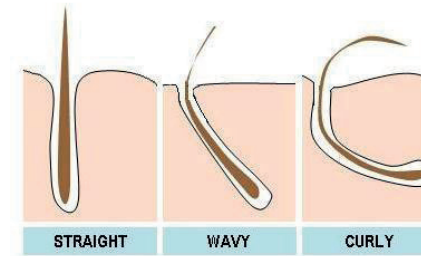
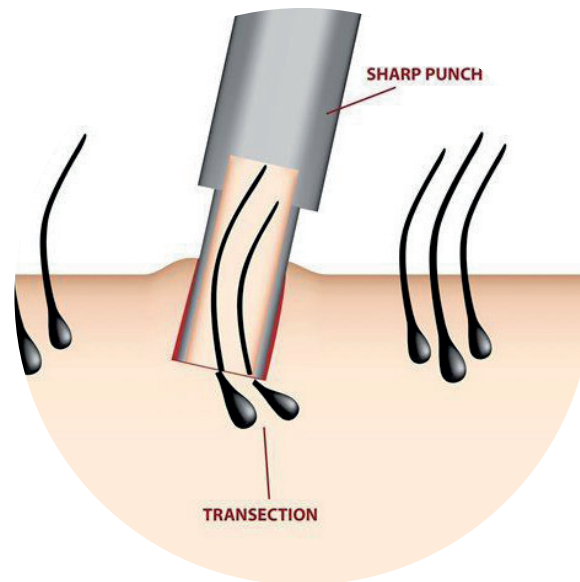


MANUAL SHARP VS MOTORISED BLUNT PUNCH

SHARP PUNCH is a tool sharp enough to puncture the skin and allow full tissue dissection down to the level of the follicle (roughly 4-5 mm) manually.

= The best results for normal, straight hair



But the direction of the hair follicles above and beneath the surface of the skin don't often match. Because of this we get increased transection rates and less viable grafts for transplanting.

BLUNT PUNCH is a motorised pedal and punch to extract follicular units. This tool with a blunt tip able to separate the follicular unit from its surrounding tissue without causing follicle transection. The unsharpened, dull tip will not slice the follicle during extraction.

= The best results for curly, wavy or slay hair

BLUNT PUNCH: A MOTOR THAT COPIES THE MOVEMENT OF THE HAND



"A third hand"

This pedal enables the doctor to realize a FUE surgery with great precision, exactly like pure manual work. He can adjust the oscillation speed and angulation freely with the support of the motorized handpiece.

He simply places the Hybrid Trumpet punch on the skin accurately and allows the pedal to assist in managing the extraction.



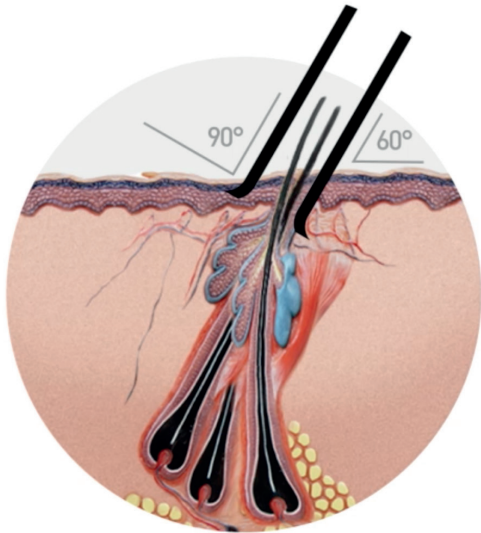
Custom-made by Nouvag



The Hybrid Trumpet punch perfectly fits into the Nouvag autoclavable handpiece, which provides excellent support. When both are combined with a Nouvag motor, the FUE surgery proceeds with ease.

Optimal FUE's

We choose our acceleration speed, oscillation mode and angulation, just like a manual punch.



The Hybrid Trumpet punch offers the dull and sharp punches' advantages.

With a 90° outer edge and a smooth funnel shaped inner edge, the HT punch makes penetration into the skin gentle and less traumatic. The Hybrid Trumpet punch works like a dissection tool rather than a cutting one.

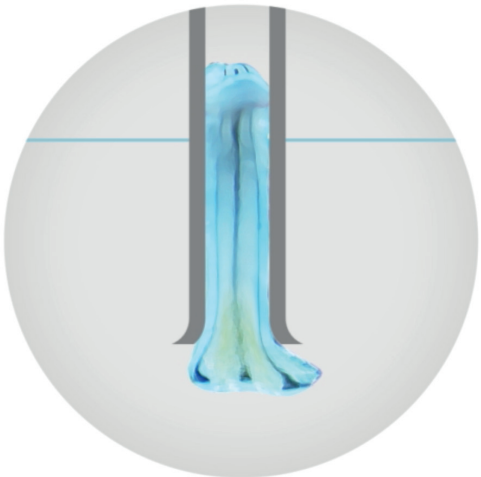
The Hybrid Trumpet punch is tailored to our needs and procedure. We can work deeper, faster and with less trauma to the surrounding areas.

Grafts Yield

- High quality grafts and a faster completion of the procedure
- Grafts that are less transected, chubbier and richer in hair

Threading Movement

- We can go deeper without damaging hair follicles, which is essential in terms of regrowth.
- The extraction speed is increased thanks to the suction effect of the punch



ADVANTAGES BLUNT PUNCH



More grafts and hair

Follicular units have a conical shape and splay. If you want to extract the whole graft using sharp punches you have to raise the punch diameter. This increases your chances of damage to the surrounding hair and decreases the number of grafts obtained.

The Hybrid Trumpet punch with its unique shape, allows you to collect both a higher quality and a greater number of grafts.



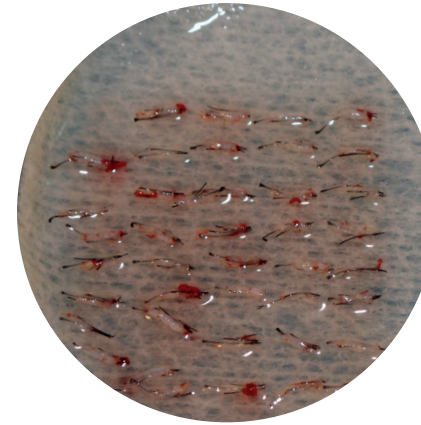
Much lower transection rate

The Hybrid Trumpet punch has a 90 degree outer edge that allows you to penetrate the skin easily. The smooth funnel shaped inner edge treats the graft carefully when working in a vertical motion. The HT punch works like a dissection tool in a less aggressive way. There is less concern of transection as the rates drop between 3 to 8 %.

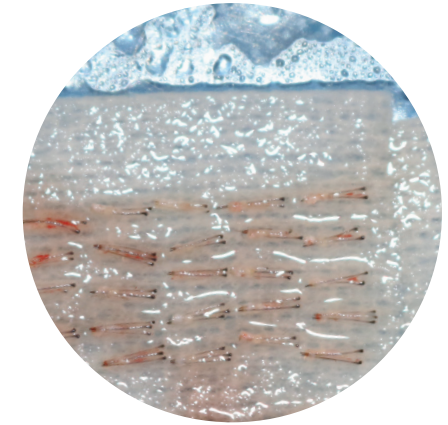


Less missing grafts

The dull punches tend to bury the grafts and the sharp punches tend to transect them. The Hybrid Trumpet punch avoids both of these issues. Working with moderate pressure along with the sucking effect of the funnel shaped inside will reduce the missing grafts rate significantly.



Bad result
sharp punch



Good result
blunt punch



Reduced scars

Thanks to its inner smooth shape, there is no need to raise the diameter of the punches to avoid transections. You have no worries of getting large scars on the skin.



Faster harvesting

Working with the Hybrid Trumpet punch requires more time during the penetration process but the grafts are left untied. These high quality grafts make the extraction process fast and easy, resulting in an overall time saving of the procedure.